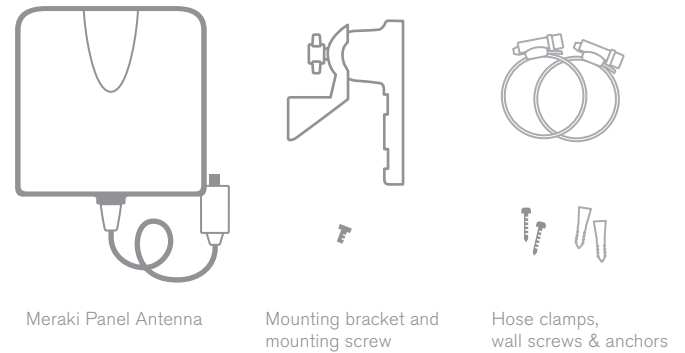


# Setup Guide

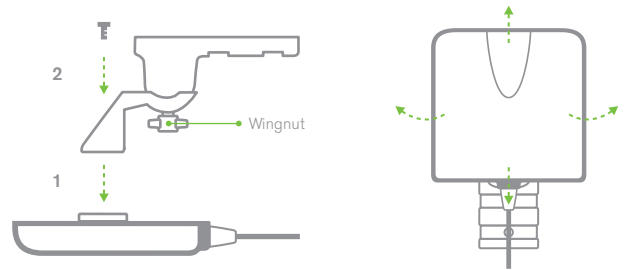
## Meraki Panel Antenna

Welcome. Here is your Meraki Panel Antenna.



\* Meraki repeater is not included.

### 1. Attach your antenna and bracket.



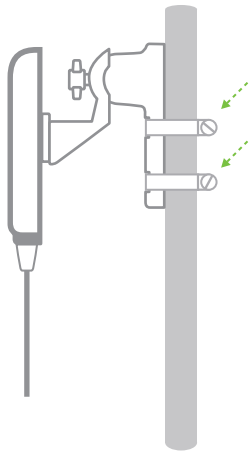
1. Place the mounting bracket into the antenna seating.
2. Secure with the mounting screw.

3. Adjust the antenna orientation and tighten the wingnut.



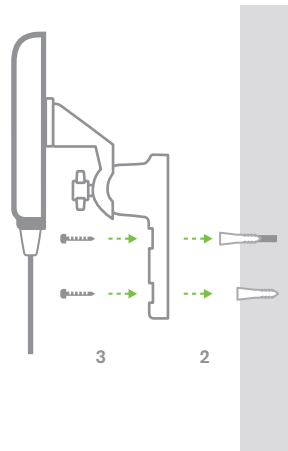
### 2. Mount your antenna.

Pole mount



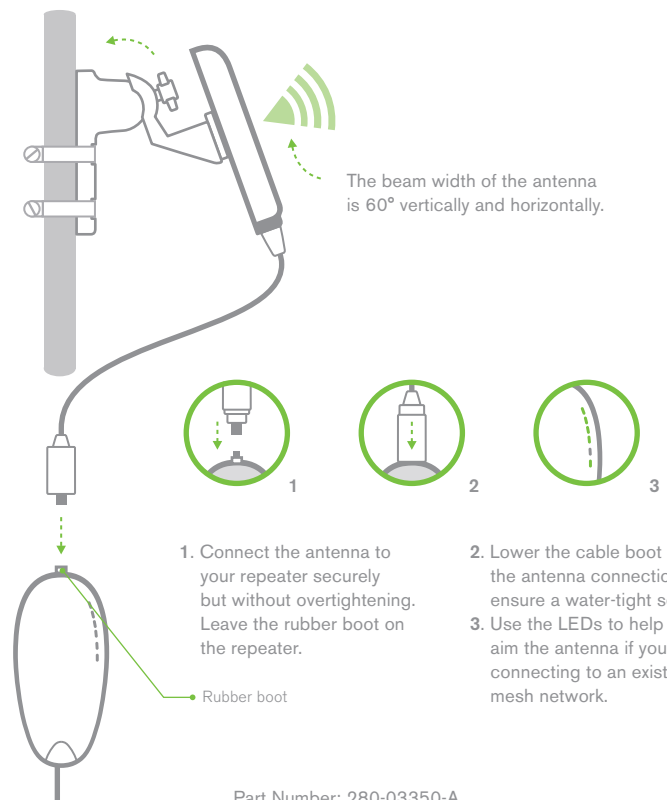
1. Place antenna and mounting bracket at desired pole elevation. Make sure the antenna cable will be long enough to reach your repeater.
2. Set the hose clamp straps in the mounting bracket grooves and tighten with a screwdriver.

Wall mount



1. Use the wall bracket as a template and mark the wall for the correct screw positions.
2. Drill holes at the marked positions and insert the wall anchors.
3. Screw the wall mounting bracket to the wall anchors.

### 3. Attach the antenna to your Meraki repeater and adjust the panel direction to maximize its signal.



The beam width of the antenna is 60° vertically and horizontally.

1. Connect the antenna to your repeater securely but without overtightening. Leave the rubber boot on the repeater.

2. Lower the cable boot over the antenna connection to ensure a water-tight seal.
3. Use the LEDs to help aim the antenna if you're connecting to an existing mesh network.

Part Number: 280-03350-A